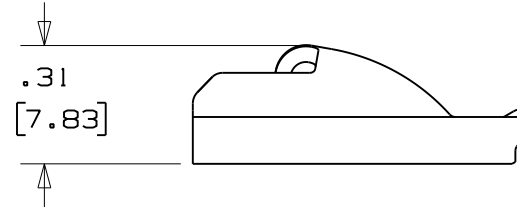
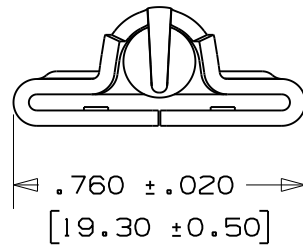
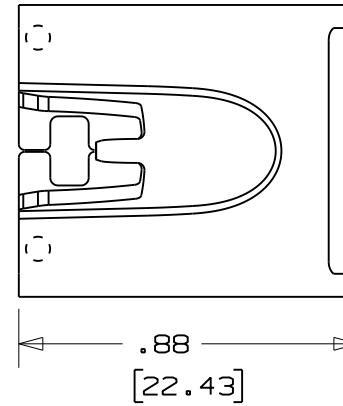


THIS COPY IS PROVIDED ON A RESTRICTED BASIS AND IS NOT TO BE USED IN ANY WAY DETRIMENTAL TO THE INTERESTS OF PANDUIT CORP.

NOTES:

1. TO BE USED WITH PANDUIT METAL BANDING MBSH-TR316.
2. APPLICATION TOOL: RT2HT
3. DIMENSIONS IN BRACKETS [] ARE MILLIMETERS.
4. MINIMUM LOOP TENSILE STRENGTH: 450 LBS (2002 newtons)
5. TOLERANCES:
 - .X = ±.030 [.762]
 - .XX = ±.020 [.508]
 - .XXX = ±.010 [.254]
 - ANGLES = ±2°



N41205BS_DC/00A

					<h1 style="margin: 0;">PANDUIT</h1> <p style="margin: 0;">CORP. TINLEY PARK, ILLINOIS</p>		
					<p style="margin: 0;">METAL LOCKING TIE HEAD-SUPER HEAVY DUTY FOR UNCOATED BANDING PART NO. MTHSH-C316 CUSTOMER DRAWING</p>		
					<p style="margin: 0;">UNLESS OTHERWISE SPECIFIED, DIMENSIONAL TOLERANCES ARE: (.X) ± (SEE (.XXX) ± (SEE (.XX) ± NOTES) ANGLES ± NOTES)</p>		<p style="margin: 0;">UNLESS OTHERWISE SPECIFIED, ALL DIMENSIONS ARE GIVEN IN INCHES, THIRD ANGLE PROJECTION.</p>
00A	10/08	JAMB	EJD	ORIG CAD FILE SPEC WAS S41205_00 NOTE 2: APPLICATION TOOL RTIHT REPLACED BY RT2HT	DRAWN BY JAMB	MAT'L:	SCALE 2x
00	8/05	JAMB	EJD	DRAWING RELEASED	SS00016	DATE 8/9/05	DRAWING NO. N41205BS_DC
REV	DATE	BY	CHK	DESCRIPTION	ECN #	CHK'D EJD	DWG A SIZE
						316 STAINLESS STEEL	